

Let's Talk





"Other things may change us, but we start and end with the family." - Anthony Brandt





GIVING BACK

VOLUNTEERISM

PUBLIC SERVICE

CHURCH SERVICE

COMMUNITY SERVICE



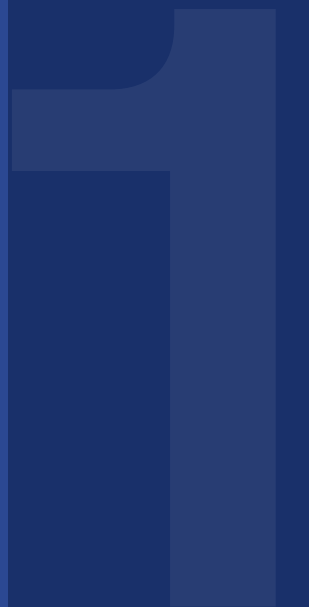


GIVING BACK



AMERICORP

More Public Service - On the National Level,
but less exciting travel than the Peace Corp :)





GIVING BACK



AMERICORP

CHIEF OF STAFF
TRANSPORTATION

12 years

4 yrs with a Democratic Governor (2 Secretaries)

8 yrs with a Republican Governor (2 Secretaries)



AMERICORP

CHIEF OF STAFF
TRANSPORTATION

SECRETARY OF TRANSPORTATION

January 2016 - Appointed Secretary by
Governor John Bel Edwards.
Currently serving my 2nd term.
The pinnacle of my career!

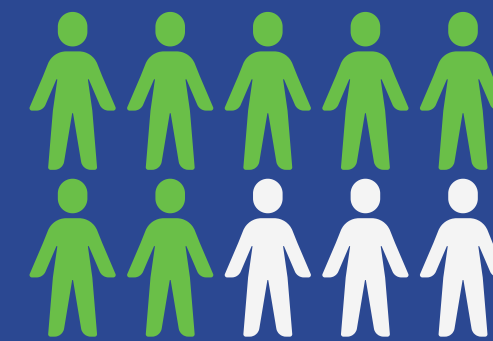
COVID-19 IMPACTS TRANSPORTATION

We are no stranger to crisis

While COVID-19 attempted to derail our operations, it never interrupted our lettings or project development.



Provided Truck
Permit Relief



784 positive cases
to-date at DOTD



4 Deaths



Telecommuting



Closed Facilities



X - JUSTICE

We all must take up the cause and take meaningful action



ACKNOWLEDGE

Leaders have to acknowledge that someone has been violated (Race, Gender, whatever the 'X' may be).

AFFIRM

People look to leaders to validate that they belong, that they are in a safe space, and that they have an equal right to be a contributing member of the team.

ACT

Words are valued, but actions are transformative and have a lasting impact.



STRIKING A BALANCE IN PUBLIC SERVICE



The terms equity and equality may sound similar, the implementation of one versus the other can lead to dramatically different outcomes.

- EQUALITY - Given the same resources or opportunities.
- EQUITY - Recognizes that each person is different and has different circumstances and allocates the resources and opportunities needed to reach an equal outcome.



EQUALITY

VS.

EQUITY

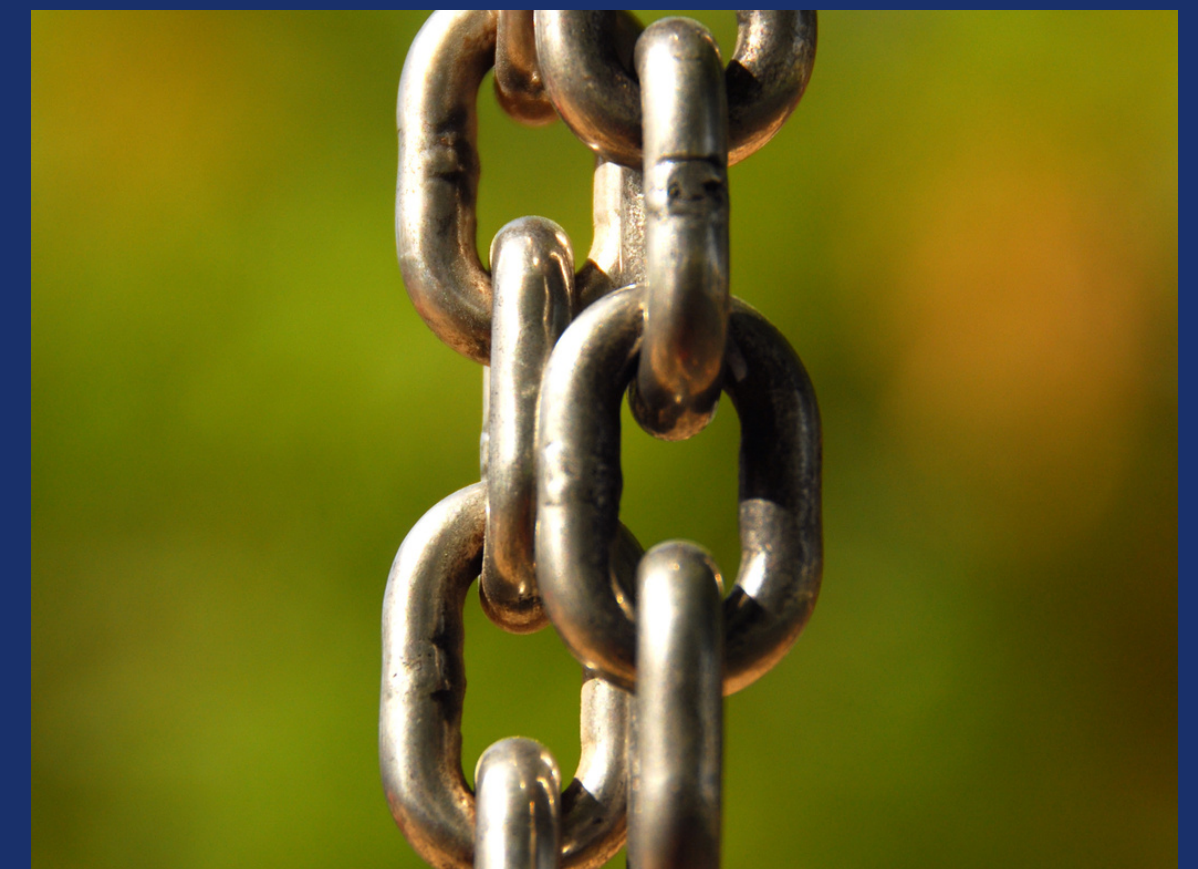


Commitments

YOU

can

make





Commitments

YOU

can

make



FAIR TREATMENT

Commit to treating people fairly, and that means with regards to compensation and opportunities for advancement and leadership.



Commitments

YOU
can
make



A VOICE

Allow participants to have a voice in presenting challenges for your team and for offering solutions.

FAIR TREATMENT



Commitments

YOU

can

make

ENVIRONMENT

Cultivate an environment where dialogue about difference is the norm.

A VOICE

FAIR TREATMENT





Commitments

YOU
can
make

TRAINING

Provide training on dealing with equity issues, specifically those that are unique to your profession / network.

ENVIRONMENT

A VOICE

FAIR TREATMENT





Commitments

YOU
can
make

PROGRAMS

Create and maintain a Diversity and Inclusion program with goals to advance your team or organization.

TRAINING

ENVIRONMENT

A VOICE

FAIR TREATMENT





COMMITMENT

Commitments

YOU

can

make

INCLUSIVE WORKFORCE

Commit to creating and maintaining an inclusive workforce with policies that embrace equity.

PROGRAMS

TRAINING

ENVIRONMENT

A VOICE

FAIR TREATMENT





COMMITMENT

Commitments

YOU
can
make

INCLUSIVE WORKFORCE

Commit to creating and maintaining an inclusive workforce with policies that embrace equity.

PROGRAMS

Create and maintain a Diversity and Inclusion program with goals to advance your team or organization.

TRAINING

Provide training on dealing with equity issues, specifically those that are unique to your profession / network.

ENVIRONMENT

Cultivate an environment where dialogue about difference is the norm.

A VOICE

Allow participants to have a voice in presenting challenges for your team and for offering solutions.

FAIR TREATMENT

Commit to treating people fairly, and that means with regards to compensation and opportunities for advancement and leadership.





DOTD'S MISSION

EFFICIENCY

HONESTY

INCLUSION

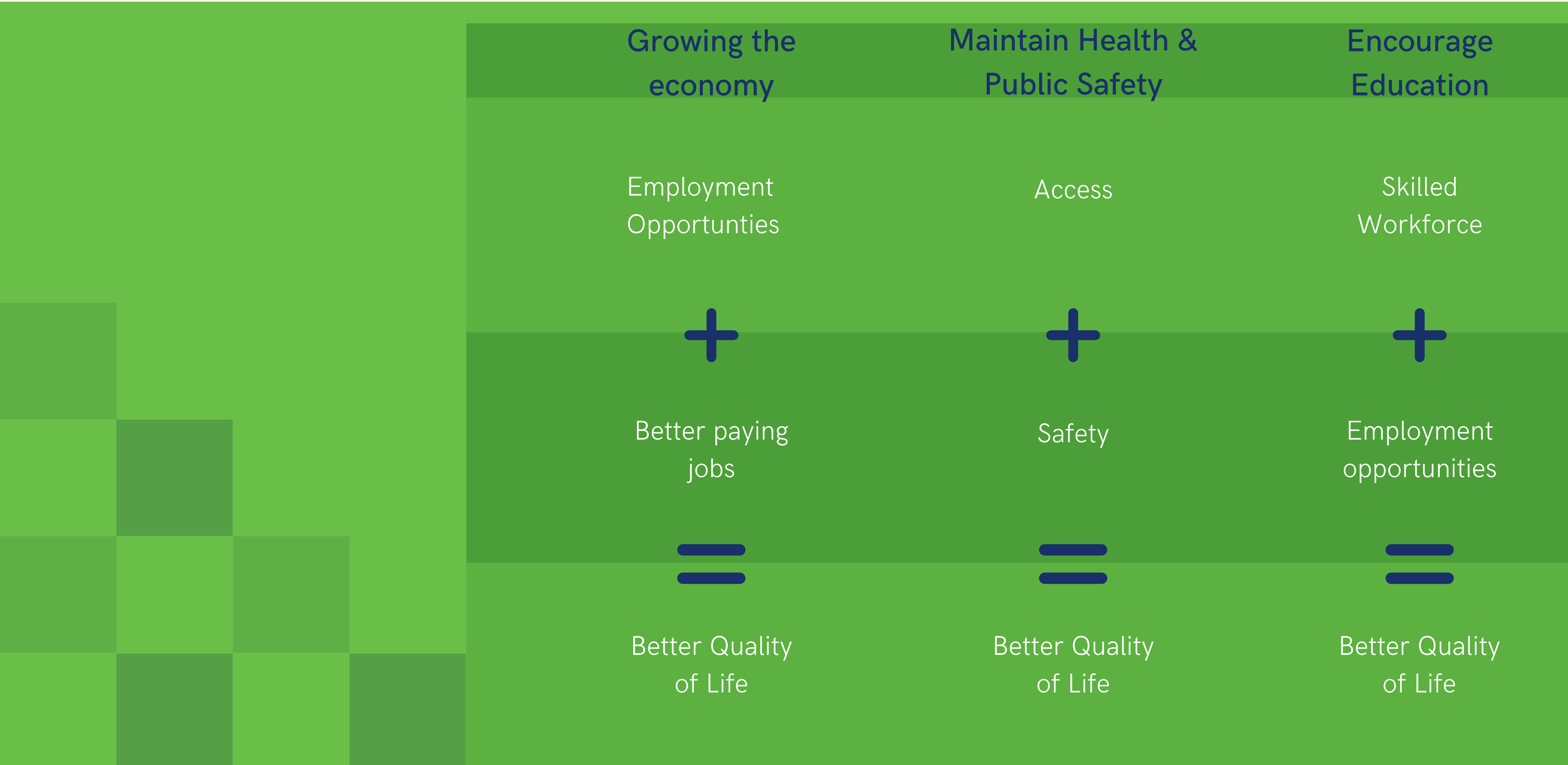
QUALITY

DEDICATION

COMMITMENT



CHASING THE CHALLENGE





INVESTING IN INFRASTRUCTURE

INFRASTRUCTURE INVESTMENT & JOBS ACT



Roads & Bridges



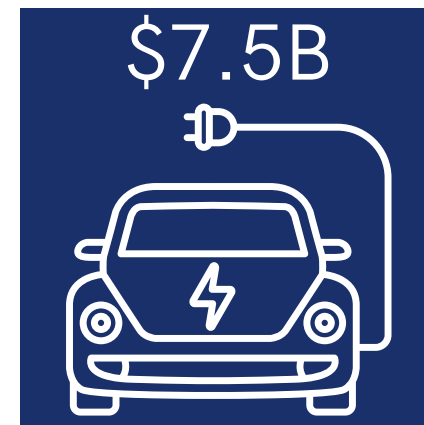
Safety



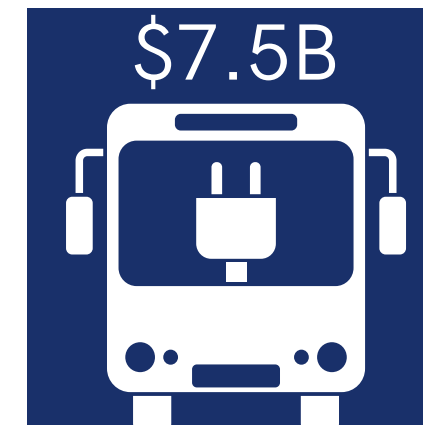
Public Transit



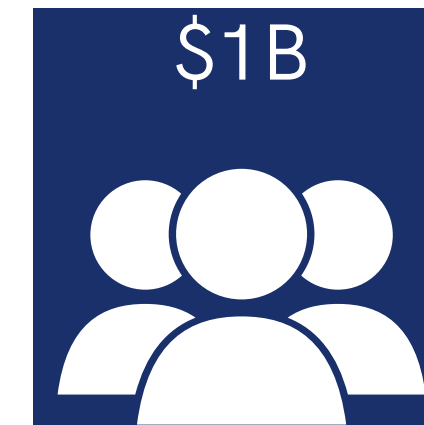
Rail



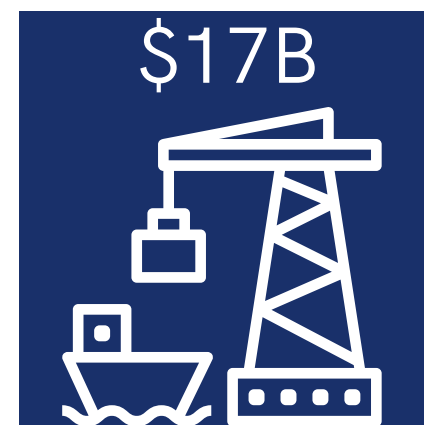
EV Infrastructure



Electric Busses



Reconnecting
Communities



Ports



Airports



Water



High Speed
Internet

BUILD BACK
BETTER



PEOPLE FOCUS

YOU make the difference



Appraisals
Real Estate Laws
Expropriation Process



People



SUMMARY

1

People

2

Equity

3

Commitment

4

Action



QUESTIONS

Contact

Shawn D. Wilson, Ph.D.

Secretary



@onevisionary

